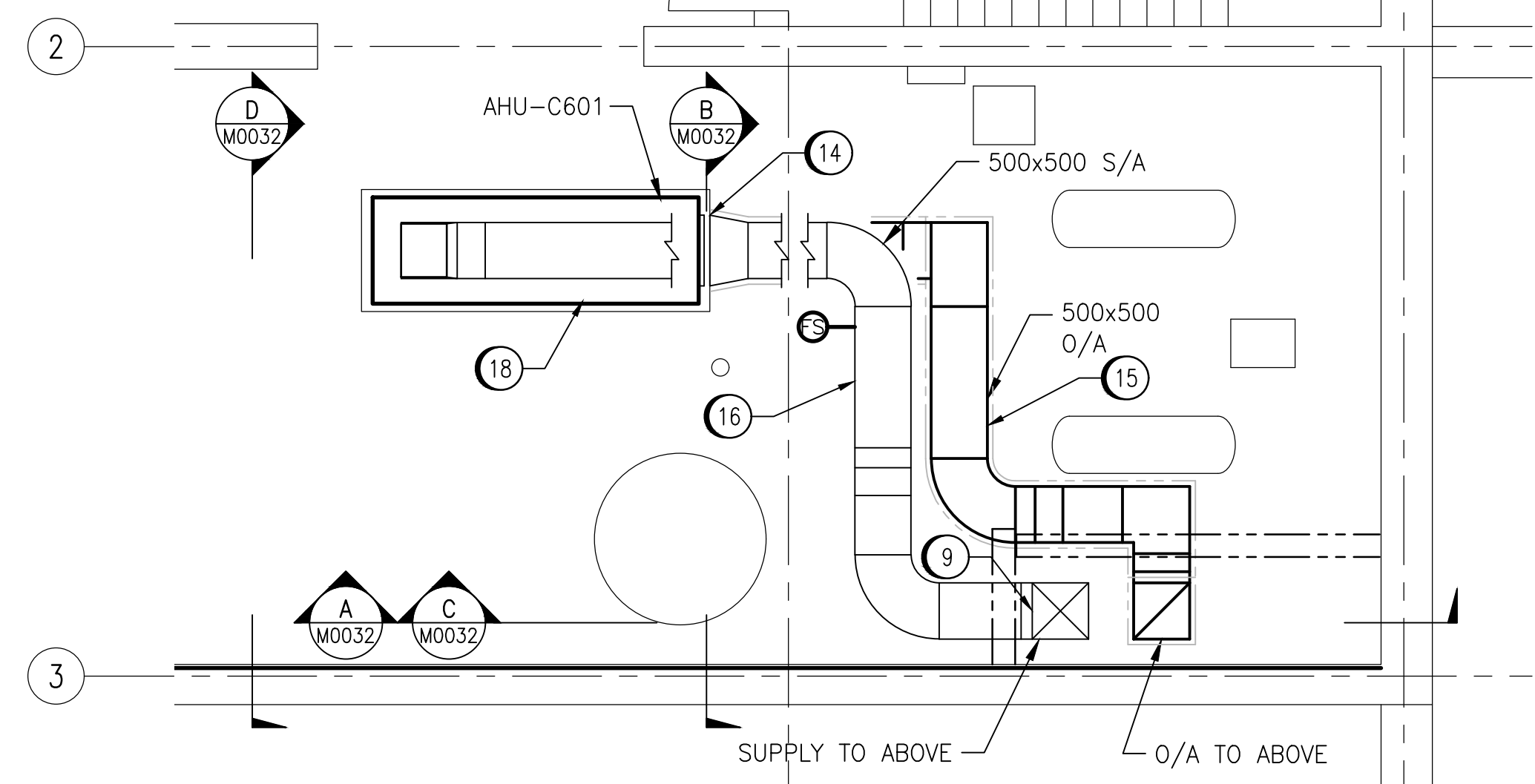
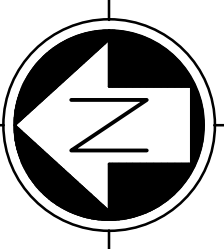
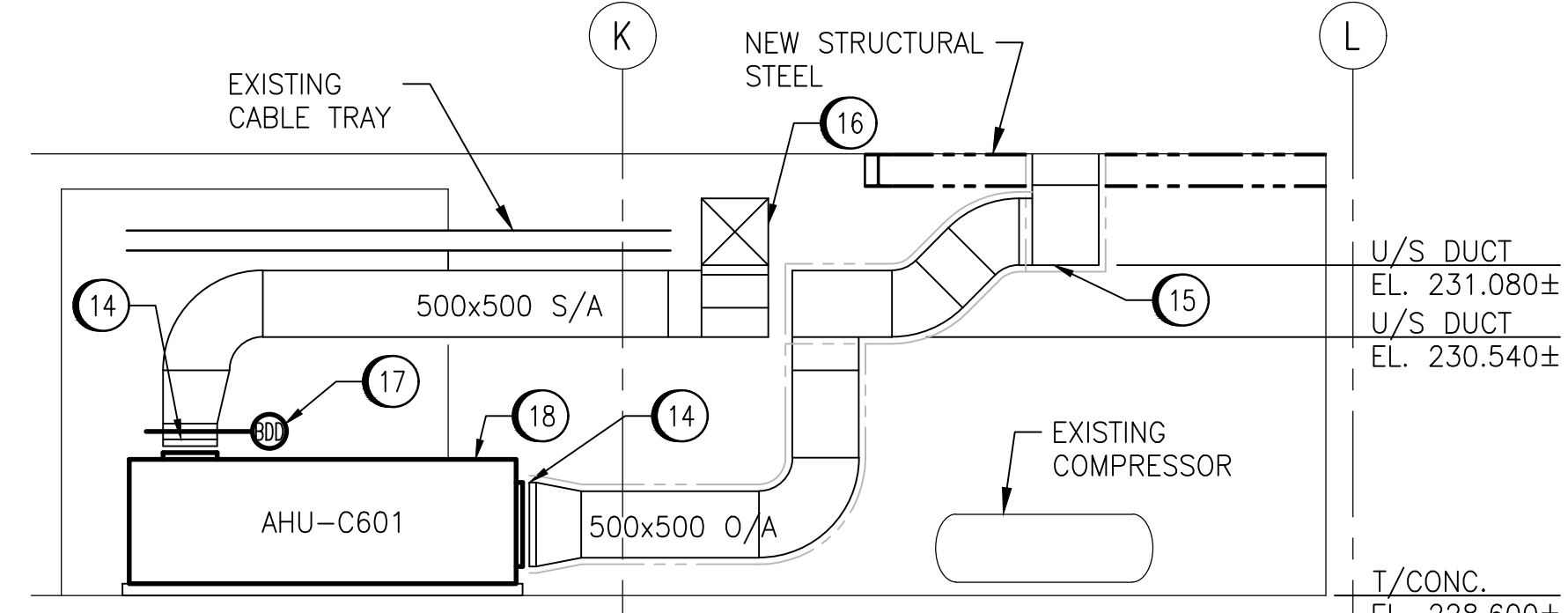


LAST SAVE: 2025/04/23 - 10:50am
PATH: \\WINPDC1.slbz\PROJ\1694715\4ENG\45MEC\DD - General DWG\MacCLEAN\1-0630M-M00XX-001-PD.dwg

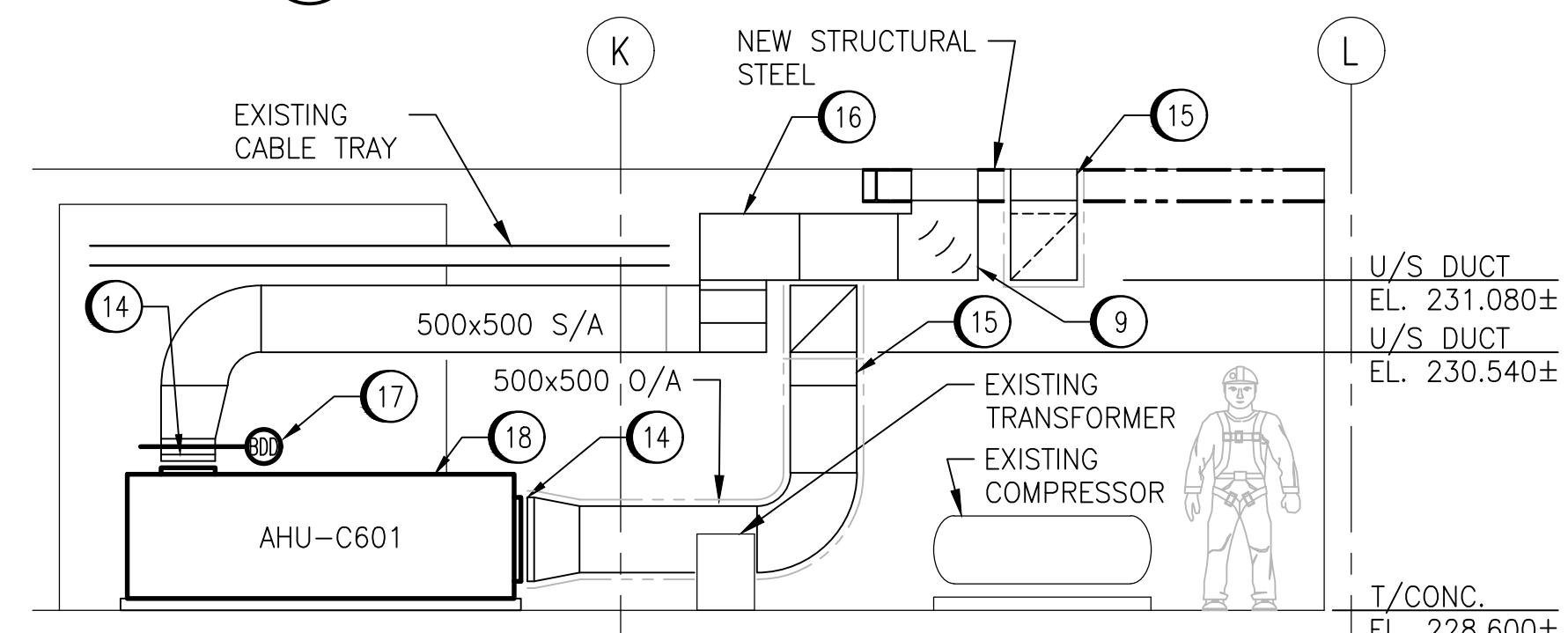
A1 SIZE - 594mm x 841mm



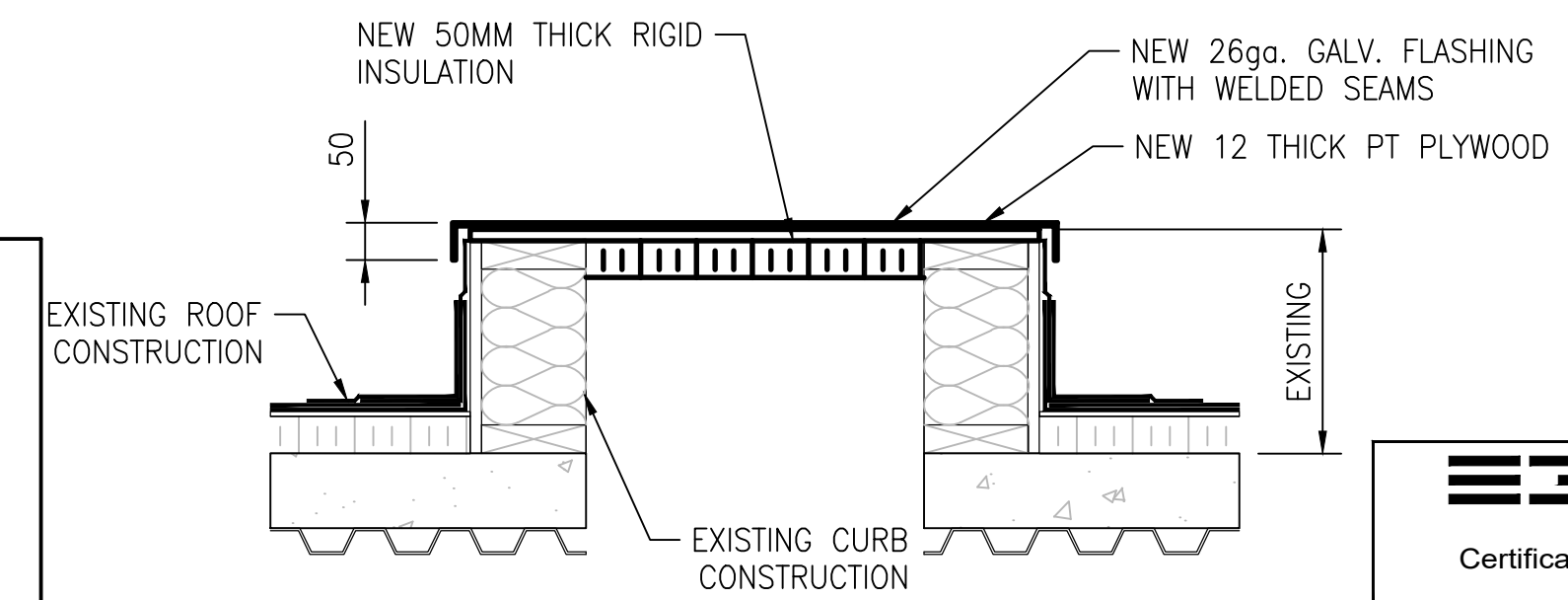
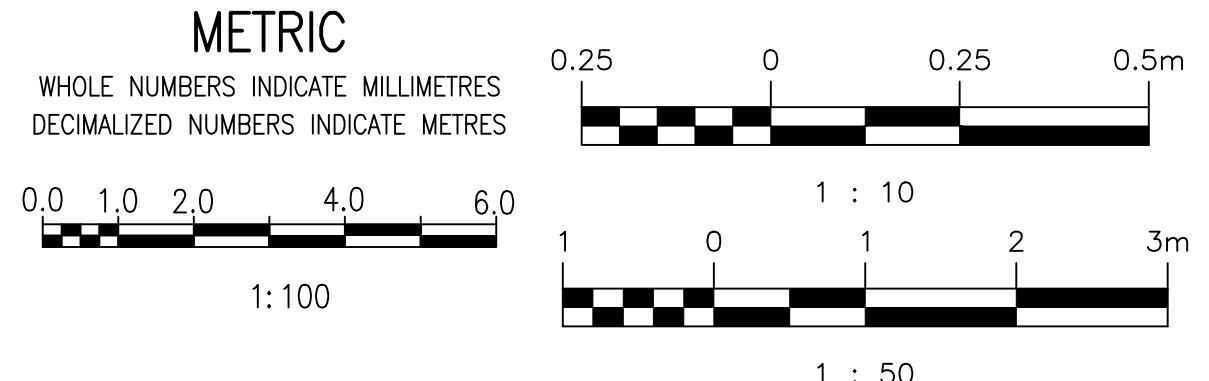
PARTIAL MEZZANINE PLAN - NEW WORK
SCALE: 1:50



A SECTION LOOKING EAST - O/A DUCT
SCALE: 1:50



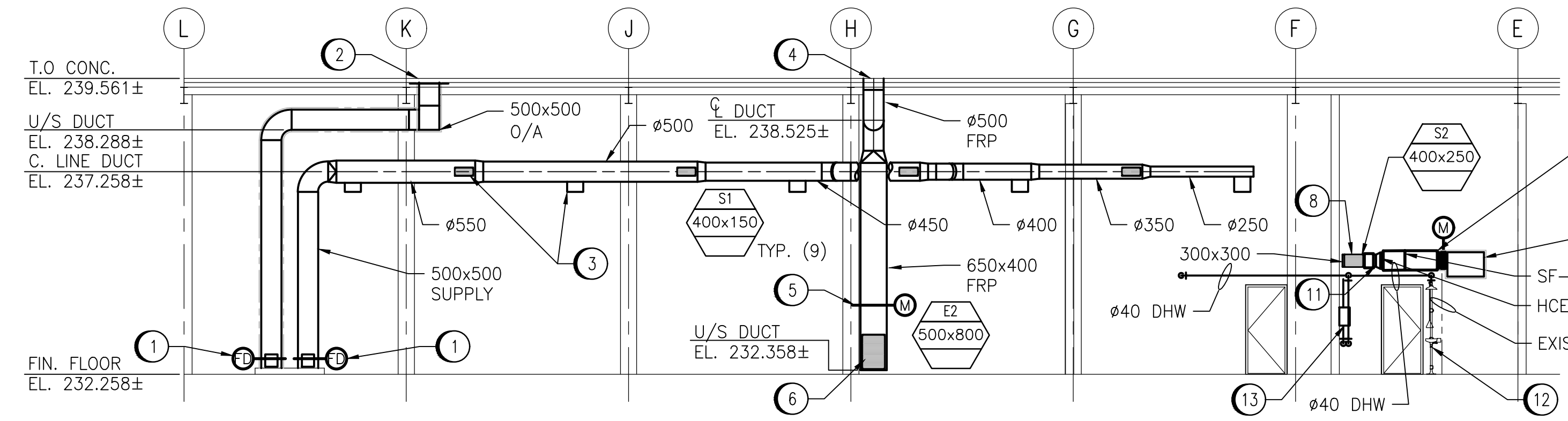
C SECTION LOOKING EAST - O/A DUCT
SCALE: 1:50



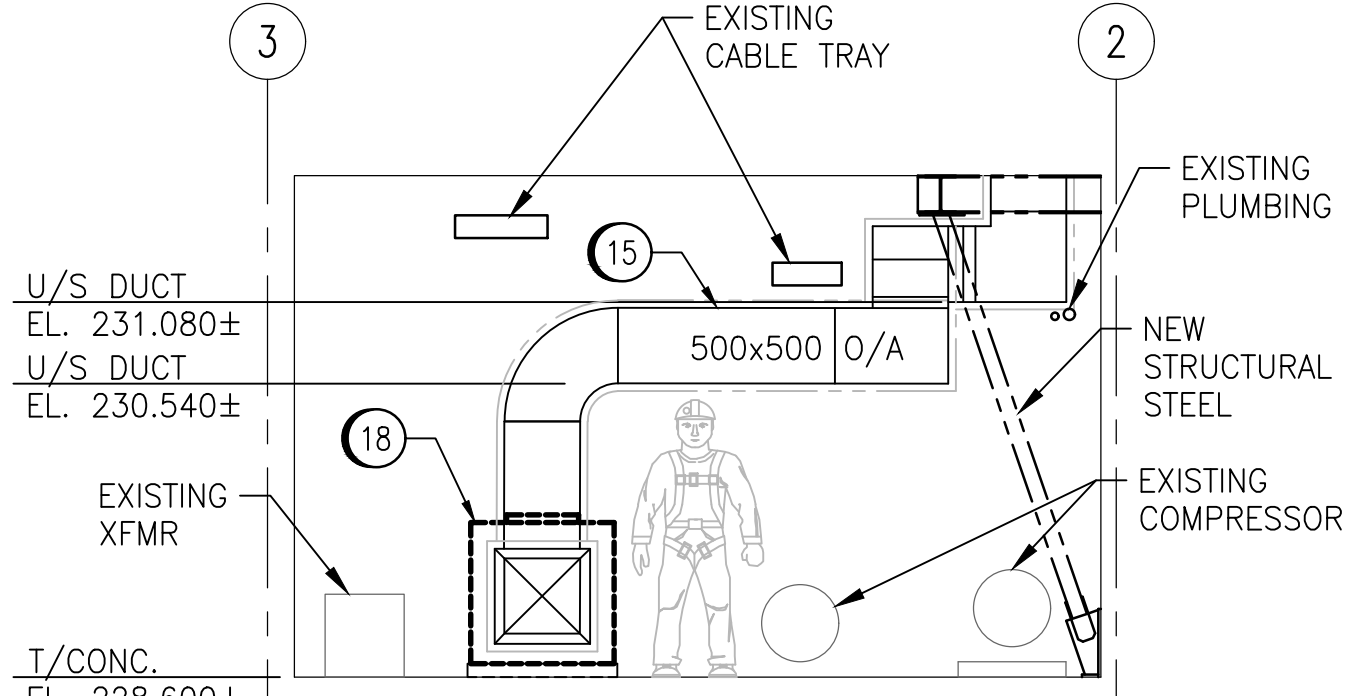
2 TYPICAL CURB CLOSURE DETAIL
SCALE: 1:10

GENERAL NOTES

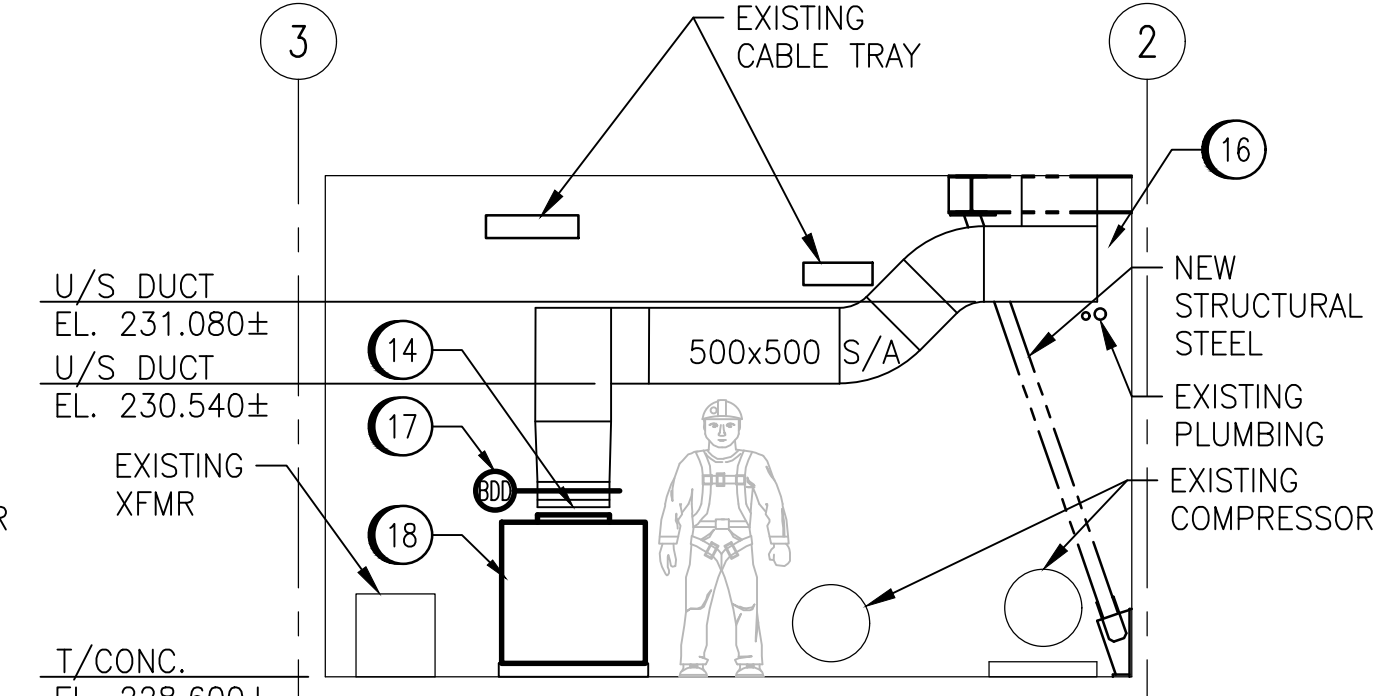
1. DRAWING INFORMATION BASED ON HISTORICAL DRAWING AND SITE INVESTIGATIONS.
2. INSULATION ON ALL EXISTING DOMESTIC WATER, FRESH AIR INTAKE, RAIN WATER LEADER, CONDENSATE AND DRAIN PIPE FITTINGS MAY CONTAIN ASBESTOS MATERIALS. REFER TO EXISTING ASBESTOS REPORTS TO CONFIRM.
3. MASONRY BLOCK WALLS, CEILING OR WALL HARD PLASTERS AND CERAMIC FLOOR TILES MAY CONTAIN ASBESTOS.
4. FLOW SWITCH SUPPLIED AND INSTALL BY ELECTRICAL CONTRACTOR.
5. REFER TO M0030 FOR OCCUPIED, UN-OCCUPIED AND EMERGENCY VOLUMES SUPPLY AND EXHAUST DAMPERS.



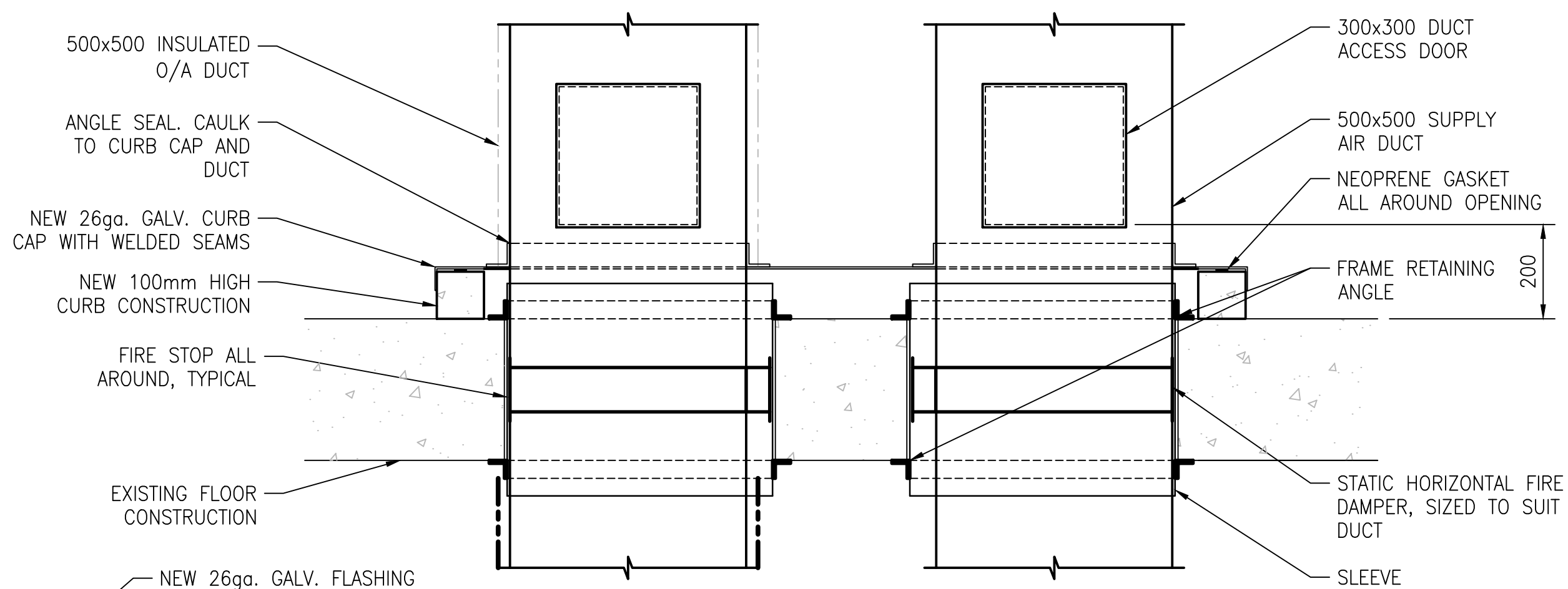
E PARTIAL SECTION - LOOKING WEST
SCALE: 1:100



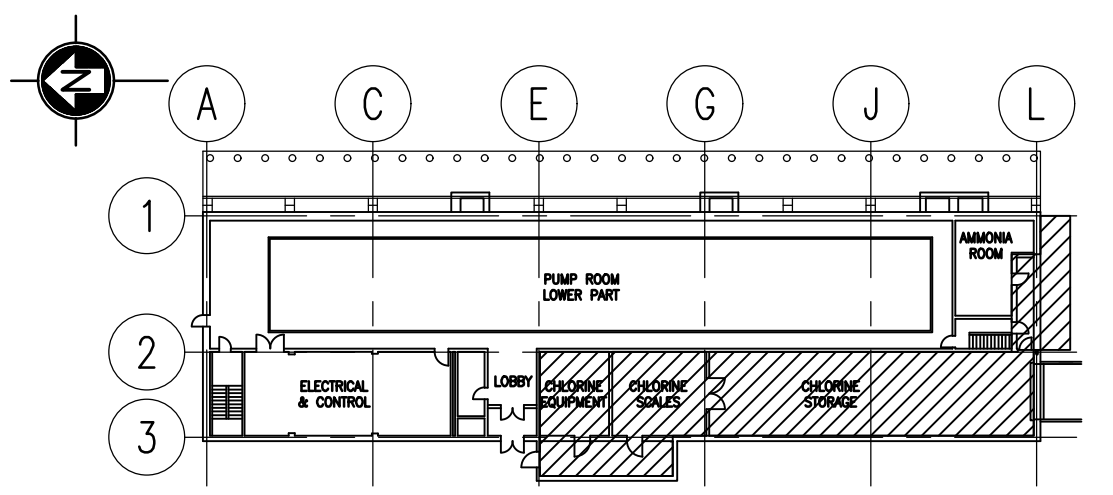
B SECTION LOOKING SOUTH - O/A DUCT
SCALE: 1:50



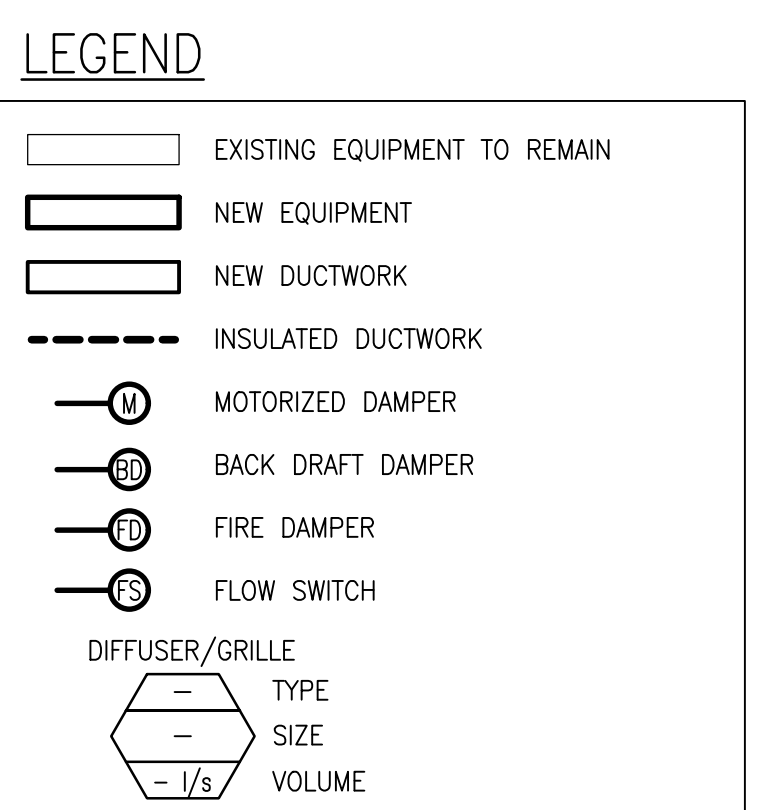
D SECTION LOOKING SOUTH - SUPPLY DUCT
SCALE: 1:50



1 DUCT PENETRATION AT FLOOR
SCALE: 1:10



KEY PLAN
SCALE: 1:500



DRAWING NOTES

- 1 500x500 DUCT FROM BELOW. INSTALL FIRE DAMPER AT FLOOR LEVEL. FIRE STOP FLOOR PENETRATION. REFER TO DETAIL 1/M0032.
- 2 500x500 DUCT UP THROUGH EXISTING ROOF PENETRATION. REFER TO ROOF CURB DETAIL 1/M0031 FOR DUCT CONNECTION.
- 3 450x200 SUPPLY C/W 400x150 SUPPLY GRILLE. INSTALL ORIENTATION AS SHOWN. BALANCE DAMPER TO BE SET FOR LARGER VOLUME SHOWN.
- 4 Ø500 FRP DUCT UP THROUGH EXISTING ROOF PENETRATION. REFER TO ROOF CURB DETAIL 1/M0033 FOR DUCT CONNECTION.
- 5 SUPPLY AND INSTALL MOTORIZED DAMPER SIZED TO SUIT DUCT.
- 6 INSTALL 500x800 SCRUBBER EXHAUST GRILLE.
- 7 INSULATED SUPPLY DUCT. SIZED TO MATCH EXISTING LOUVERED OPENING.
- 8 300x300 SUPPLY DUCT C/W 400x250 GRILLE.
- 9 SUPPLY AND INSTALL SQUARE ELBOW C/W WITH TURNING VANES.
- 10 SUPPLY AND INSTALL SF-C630 SUPPLY FAN C/W FILTER SECTION. SUPPLY AND INSTALL MOTORIZED DAMPER. COORDINATE WITH ELECTRICAL.
- 11 SUPPLY AND INSTALL NEW DUCT HEATER HCE-C620. COORDINATE WITH ELECTRICAL.
- 12 REUSE EXISTING SAFETY SHOWER/EYEWASH. CONNECT TO NEW Ø40 DHW PIPING FROM NEW WATER HEATER.
- 13 INSTALL NEW SAFETY SHOWER/EYEWASH WATER HEATER. COORDINATE WITH ELECTRICAL. REFER TO PIPING DETAIL FOR TYPICAL INSTALLATION. CONNECT TO EXISTING Ø40 DCW CONNECT LOCATED ABOVE EXISTING SHOWER LOCATION. RUN Ø40 TO NEW VESTIBULE SAFETY SHOWER/EYEWASH LOCATION.
- 14 SUPPLY AND INSTALL FLEXIBLE CONNECTION AT O/A INLET AND SUPPLY DISCHARGE ON UNIT.
- 15 SUPPLY AND INSTALL INSULATED 500x500 O/A DUCT. SUPPORT FROM STRUCTURE ABOVE.
- 16 SUPPLY AND INSTALL 500x500 SUPPLY AIR DUCT. SUPPORT FROM STRUCTURE ABOVE.
- 17 SUPPLY AND INSTALL BACK DRAFT DAMPER AT SUPPLY AIR DISCHARGE.
- 18 SUPPLY AND INSTALL AHU-C601 ON 100mm HIGH HOUSEKEEPING PAD. COORDINATE WITH ELECTRICAL.



DESIGNED BY: T. SHAW				CHECKED BY: S. NORSEWORTHY			
DRAWN BY: M. CAUDINO				APPROVED BY: S. NORSEWORTHY			
SCALE: AS NOTED				ISSUED FOR CONSTRUCTION BY: M. SKINNER			
DATE: 2023-03-06				DATE: 2025/04/30			
CONSULTANT NO.: 694715-2000-45DD-1004							
00	ISSUED FOR TENDER AND CONSTRUCTION	2025/04/30	TS	SN			
NO.	REVISIONS	DATE	DESIGN	CHECK			

ENGINEER'S SEAL

AtkinsRéalis
148 Nature Park Way, Winnipeg, Manitoba
Canada R3P 0X7 204-786-8080

THE CITY OF WINNIPEG
WATER AND WASTE DEPARTMENT

MACLEAN PUMPING STATION
CHLORINE SYSTEM UPGRADE
MECHANICAL
NEW WORK
SECTIONS PLANS AND DETAILS

CITY DRAWING NUMBER	SHEET	REV.	SIZE
1-0630M-M0032	001	00	A1